

Newhurst ERF Local Liaison Committee Project Update October 2022

Newhurst Energy Recovery Facility

| | Newhurst |
|------------------------------------|---------------------------|
| Location | Shepshed, Leicestershire |
| Capacity (gross) | 350 ktpy; ~42 MW |
| Financial Close | February 11, 2020 |
| Engineer, Procure, Construct (EPC) | Hitachi Zosen INOVA (HZI) |
| Operator | Covanta |
| Scheduled Completion Date | Q2 2023 |

Construction (99% complete) and commissioning (88% complete) progressing on time

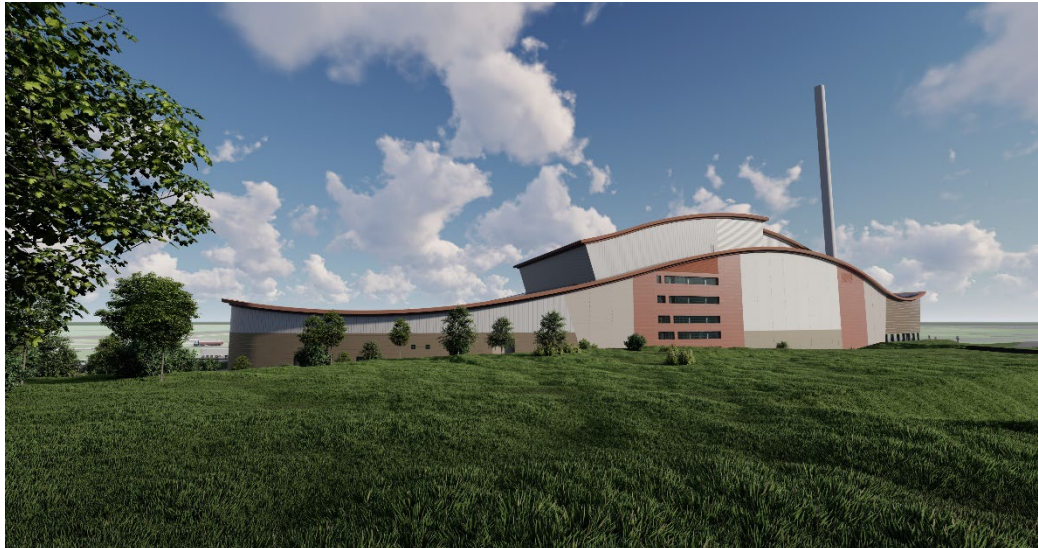
Overall, the project is 97% complete

Boiler boil-out commenced in August followed by Steam Blows in September

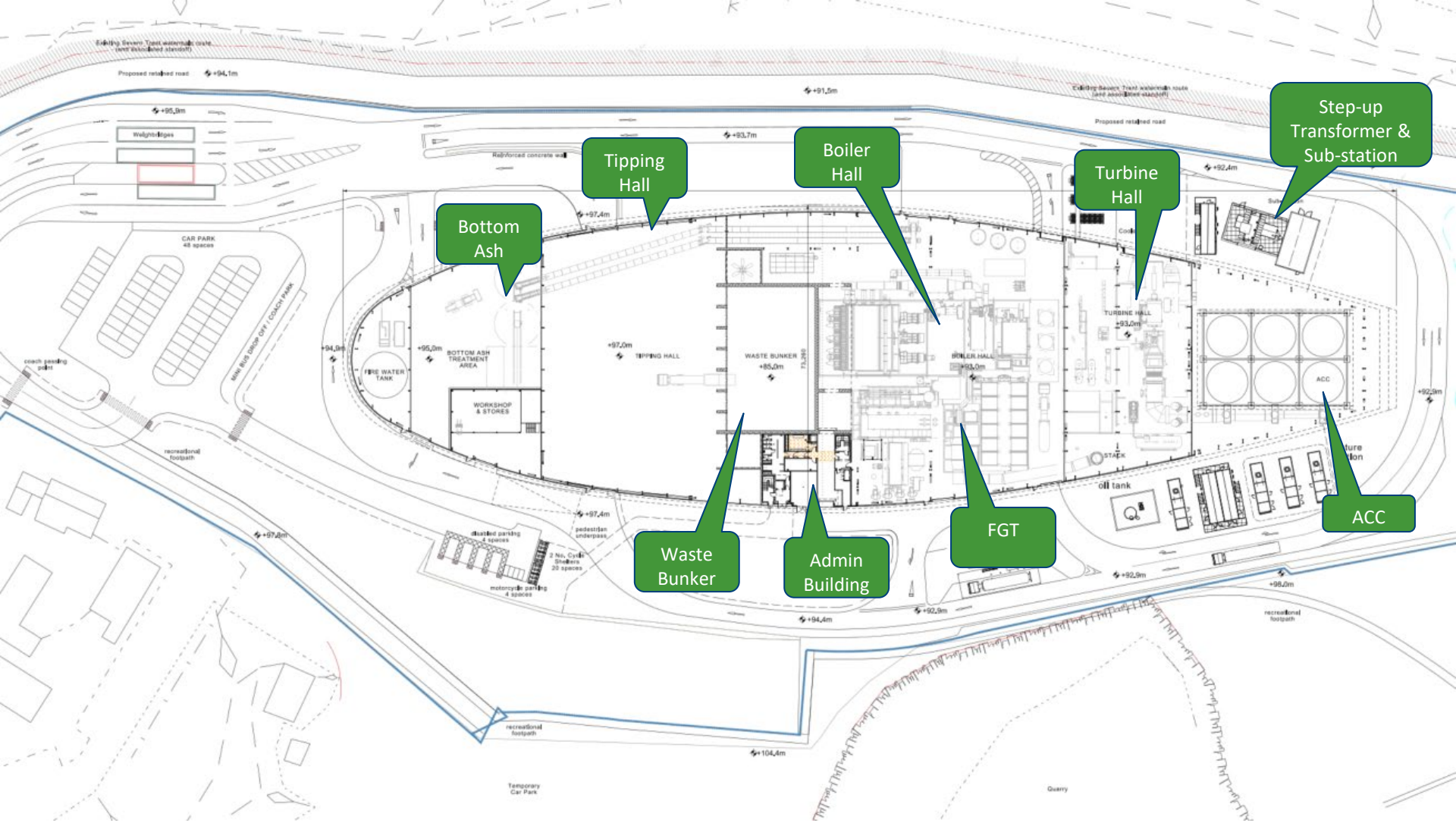
First waste deliveries expected on site early October, shortly followed by first fire with waste.

Next phase of commissioning involves optimisation of all systems before starting the Take Over Tests in the first half of 2023.

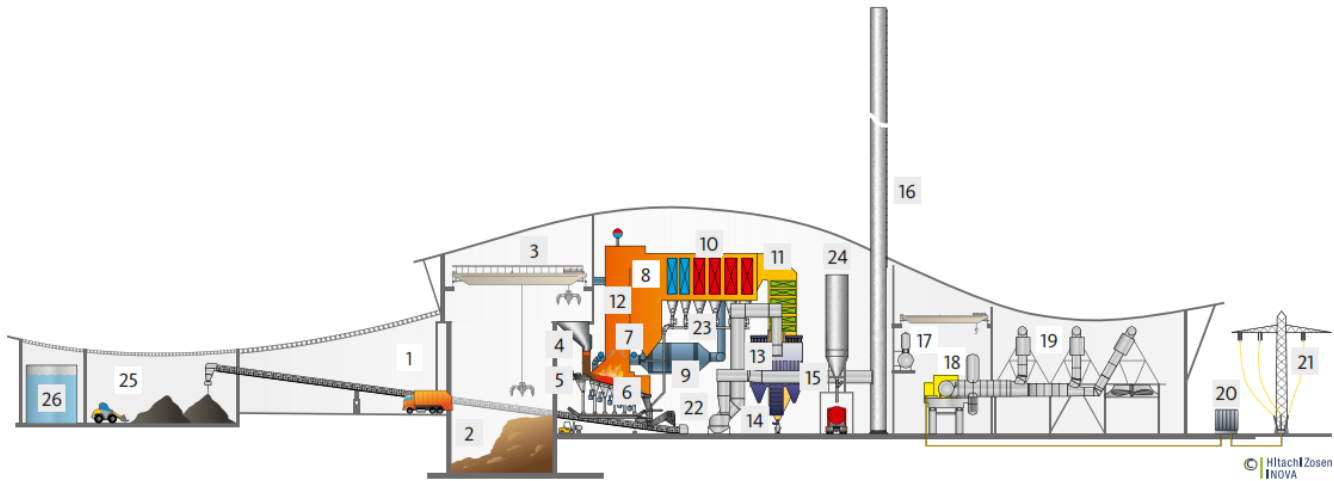
Around 250 operatives currently working on site, now over 1.9 million project hours.



General Arrangement



How does it work?



Waste Delivery and Storage

- 1 Delivery hall
- 2 Waste bunker
- 3 Waste crane

Combustion and Boiler

- 4 Feed hopper
- 5 Ram feeder
- 6 HZI Grate
- 7 Secondary air
- 8 Four-pass boiler
- 9 Primary air
- 10 Superheater
- 11 Economiser

Flue Gas Treatment

- 12 SNCR DyNOR®
- 13 Fabric filter
- 14 Induced draught fan
- 15 Flue gas duct
- 16 Stack

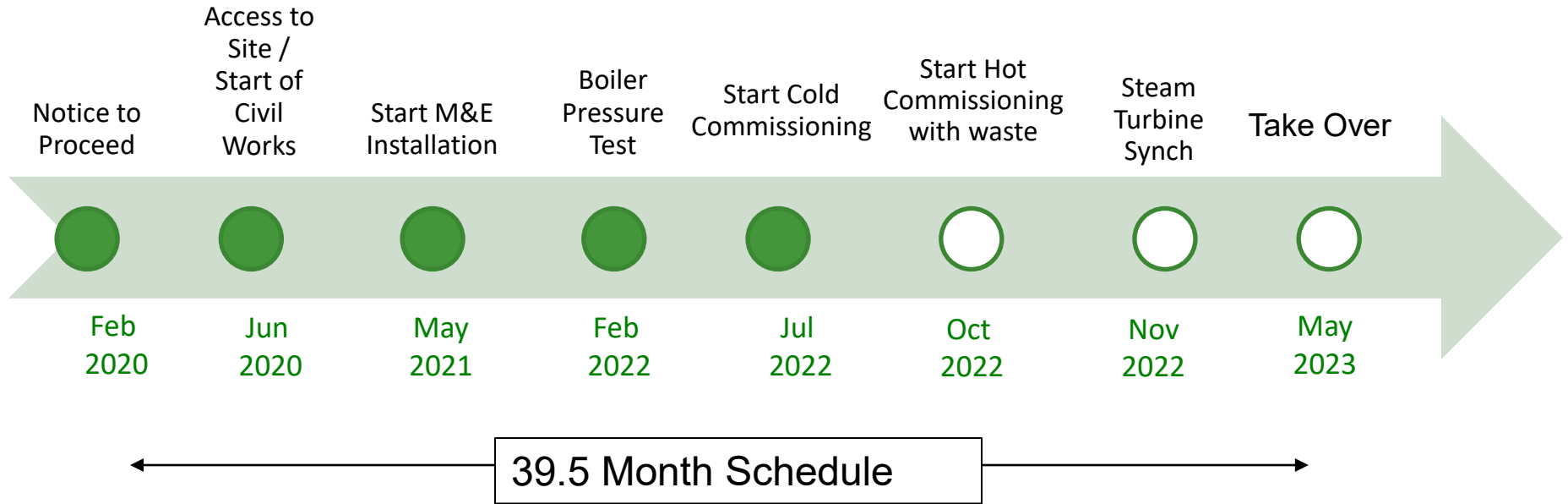
Energy Recovery

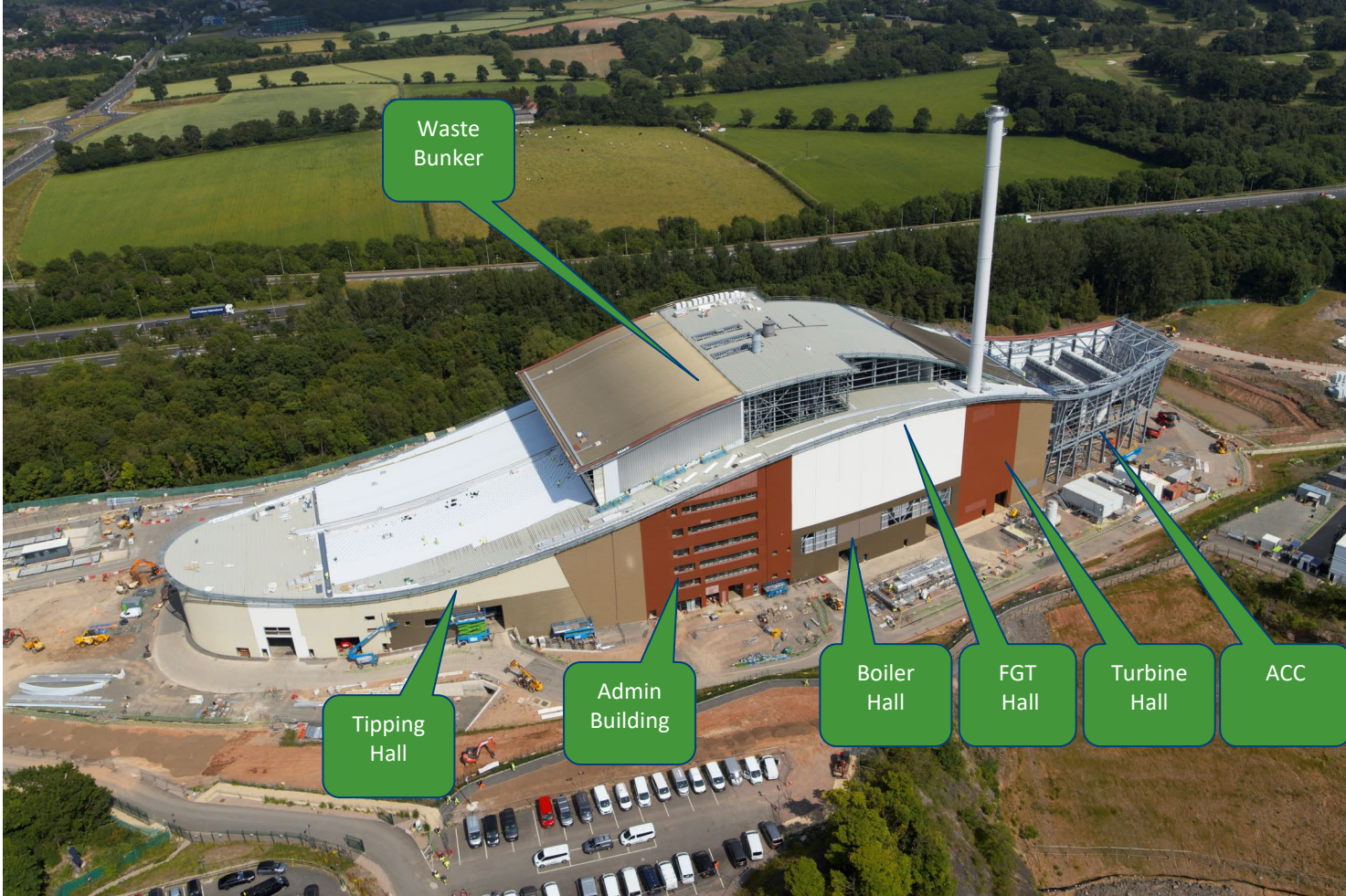
- 17 Feed water tank
- 18 Steam turbine
- 19 Air cooled condenser
- 20 Transformer
- 21 Electrical power distribution

Residue Handling and Treatment

- 22 Bottom ash extractor
- 23 Boiler ash discharge
- 24 Residue silos
- 25 Bottom ash area
- 26 Fire water tank

Project Timeline





October 2022



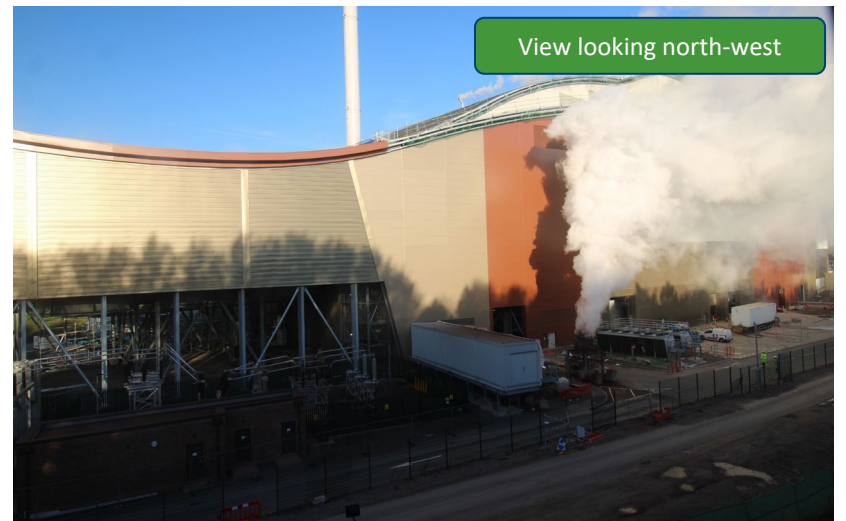
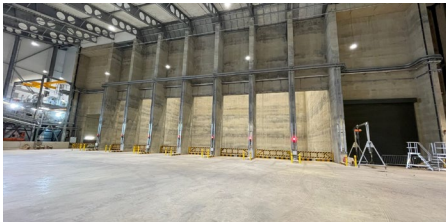
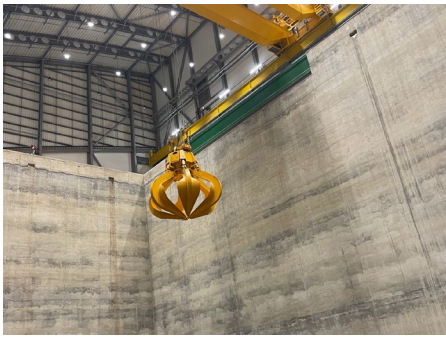
Progress Photos – October 2022



View looking north

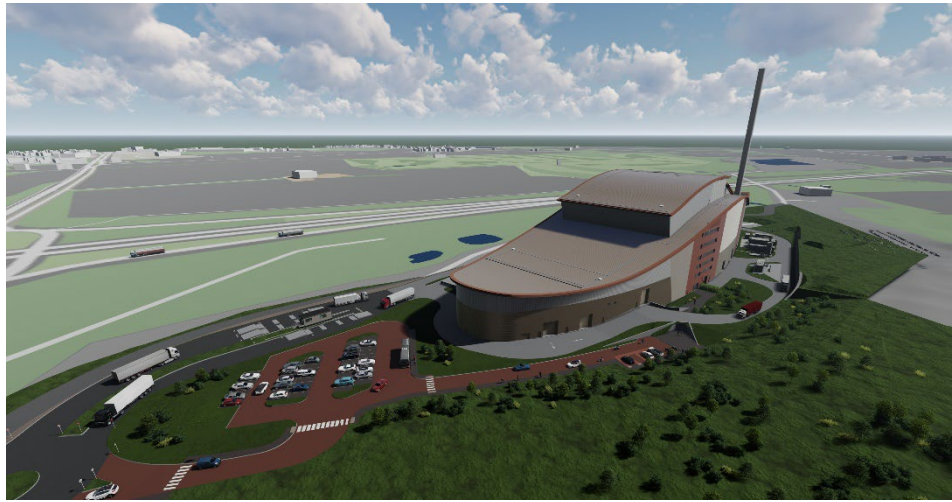


View looking south-east

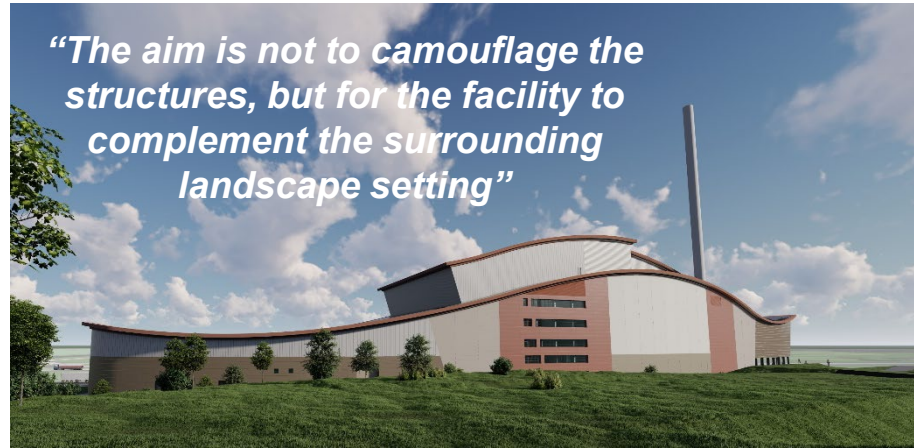


View looking north-west

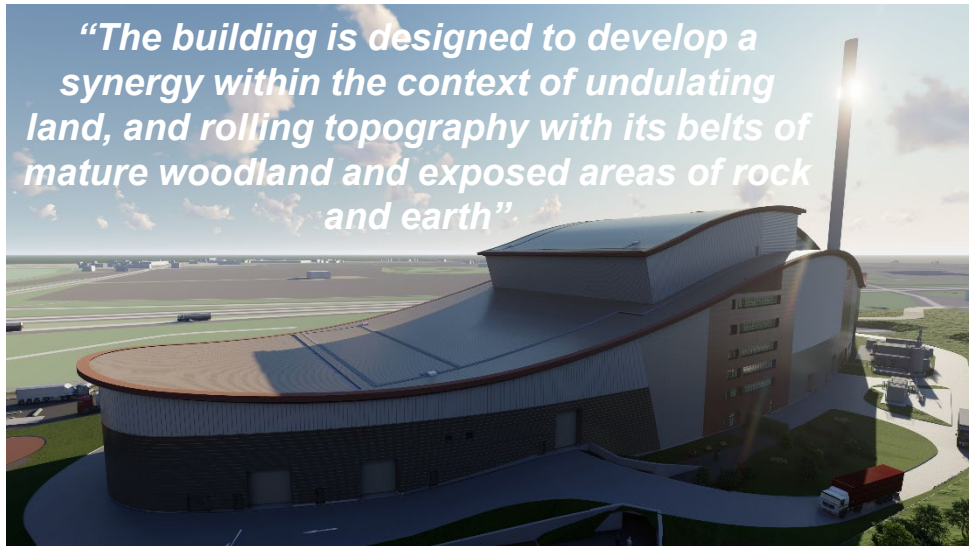
What will it look like when it is built?



“The aim is not to camouflage the structures, but for the facility to complement the surrounding landscape setting”



“The building is designed to develop a synergy within the context of undulating land, and rolling topography with its belts of mature woodland and exposed areas of rock and earth”



Planned vs Reality



Construction Progress over last 3 months

- Erection of the Building Envelope continued with cladding works substantially complete.
- Cold commissioning substantially complete with all systems tested prior to hot commissioning.
- Installation of the Turbine Generator continued.
- Hot commissioning progressing well with Boiler Boil-out and Steam Blows complete.

3 Month Lookahead

- First waste deliveries scheduled this month.
 - Followed by Hot Commissioning on waste.
 - Complete cold commissioning of Steam Turbine Generator with a view to synchronise to the Grid in November.
-
- *Any questions?*